

MOBILE CRUSHING  
PLANT

**DASWELL**

Dedicated to providing better construction machinery  
Create more value for customers

Henan Daswell Machinery Co., Ltd.  
Address: No. 2 Business Park, Zhengdong district, Zhengzhou Area, China  
Fax: +86-371-55186675  
Tel: +86 371-55186675  
Mail: machine@daswell.com

.....  
[www.daswell.com](http://www.daswell.com)



We help to build a better world

# MOBILE CRUSHING PLANT

Customers First | Dedication | Perseverance



## Company introduction

# 2022

Daswell is a company specializing in the research, design and production of construction and mining machinery for many years.

Our main products are concrete machinery such as concrete pumping machine, batching plant, mixers, also bolt silos and asphalt plant product ,and also stone crushing and grinding machine like jaw crusher, cone crusher, vibrating screen, stationary and mobile crushing plant, and roller mills, ball mill grinding plant,etc.

Till now, our machinery have been sold to more than 80 countries in the world such as Germany, USA, UK, Ireland, Norway, Australia, New Zealand, Russia, Brazil, Philippines, Thailand, Malaysia, Indonesia, Vietnam, Mexico, Colombia, Ecuador, Uruguay, Egypt, Nigeria, South Africa and so on.

And we have several branch companies and warehouse in different places in the world to do better service for our customers.

We are growing mainly by our good reputation year by year, as we always promise to supply high quality products with good service all the time.



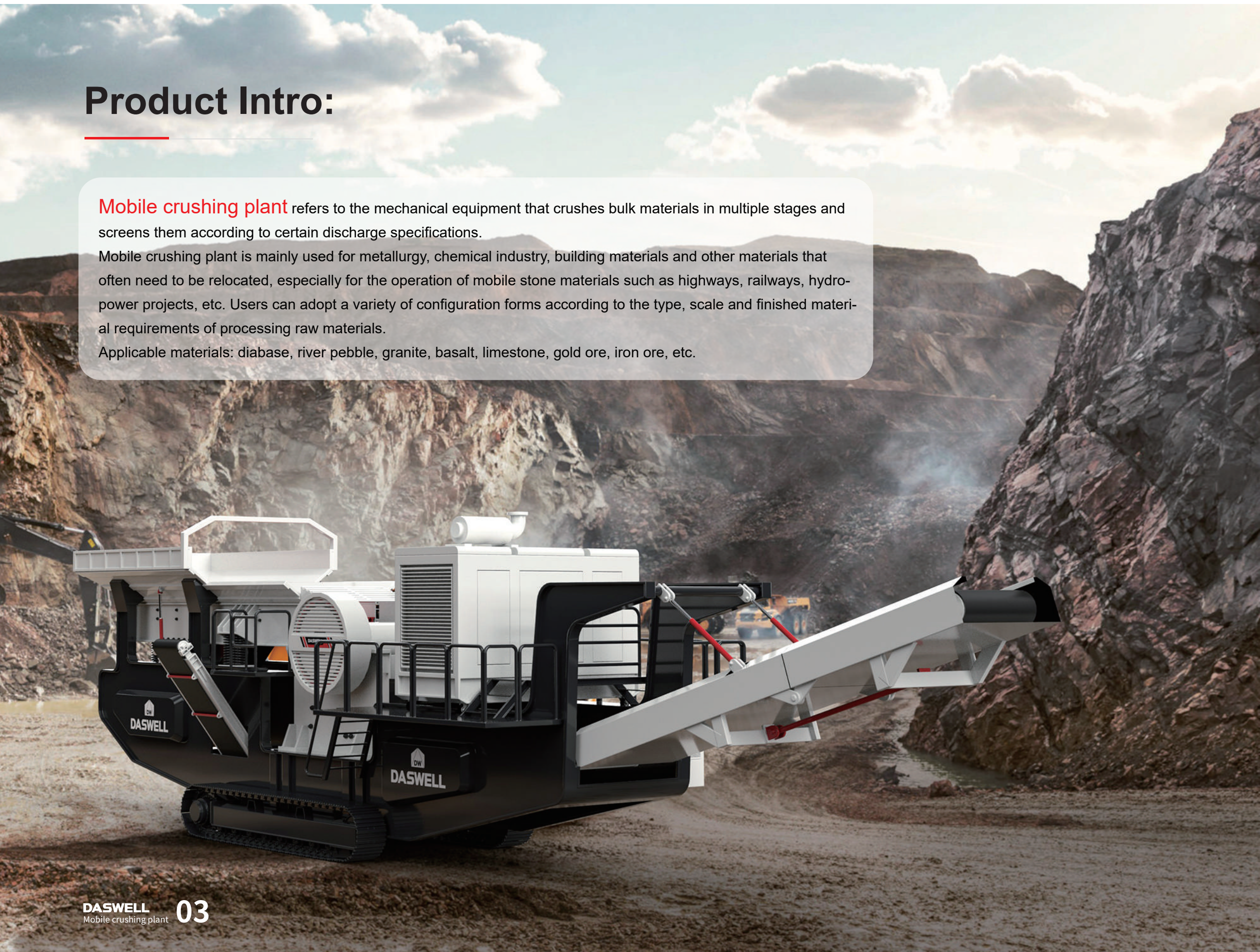


# Product Intro:

**Mobile crushing plant** refers to the mechanical equipment that crushes bulk materials in multiple stages and screens them according to certain discharge specifications.

Mobile crushing plant is mainly used for metallurgy, chemical industry, building materials and other materials that often need to be relocated, especially for the operation of mobile stone materials such as highways, railways, hydro-power projects, etc. Users can adopt a variety of configuration forms according to the type, scale and finished material requirements of processing raw materials.

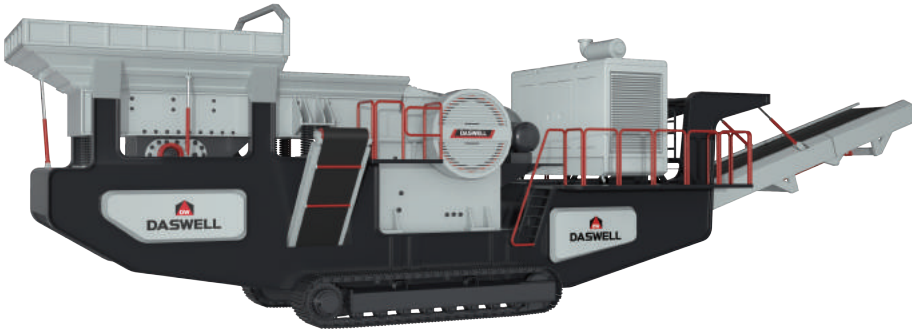
Applicable materials: diabase, river pebble, granite, basalt, limestone, gold ore, iron ore, etc.



# Product type



Rubber-tired mobile crushing plant (Jaw crusher + cone crusher)



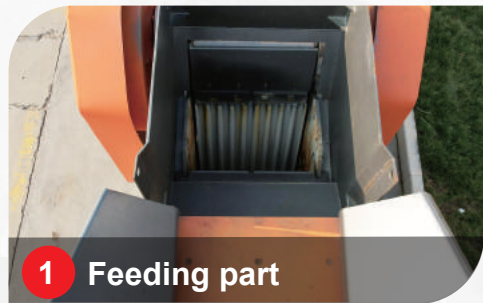
Crawler-type mobile crushing plant (Jaw crusher)



# System layout

(Rubber-tired mobile crushing plant)

The mobile crushing plant could according to different crushing process requirements to be composed of "first crushing and then screening" or "first screening and then crushing" process. The crushing plant can be combined into two-stage crushing and screening systems according to actual needs. It can be combined into a three-stage crushing and screening system of coarse crushing, medium crushing and fine crushing, and can also operate independently with great flexibility.



1 Feeding part



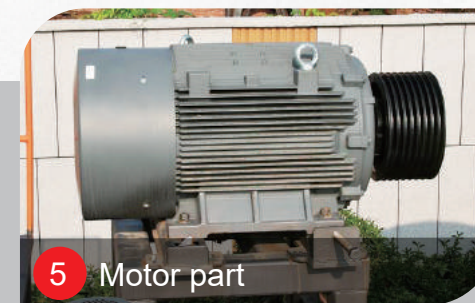
2 Hydraulic part



3 Crushing part



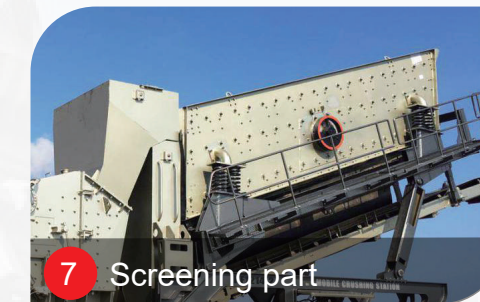
4 Belt conveyor part



5 Motor part



6 Electric control part



7 Screening part



8 Walkway Covering part



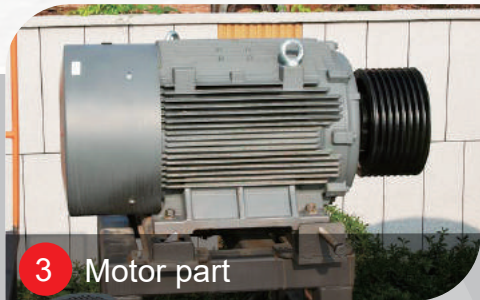
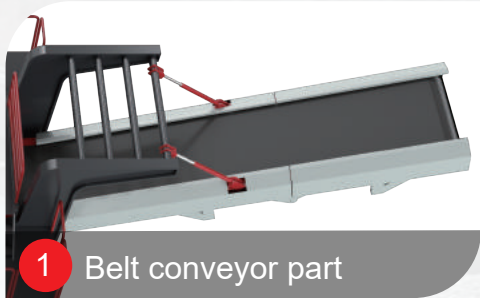
9 Tire walking part



# System layout

(Crawler-type mobile crushing plant)

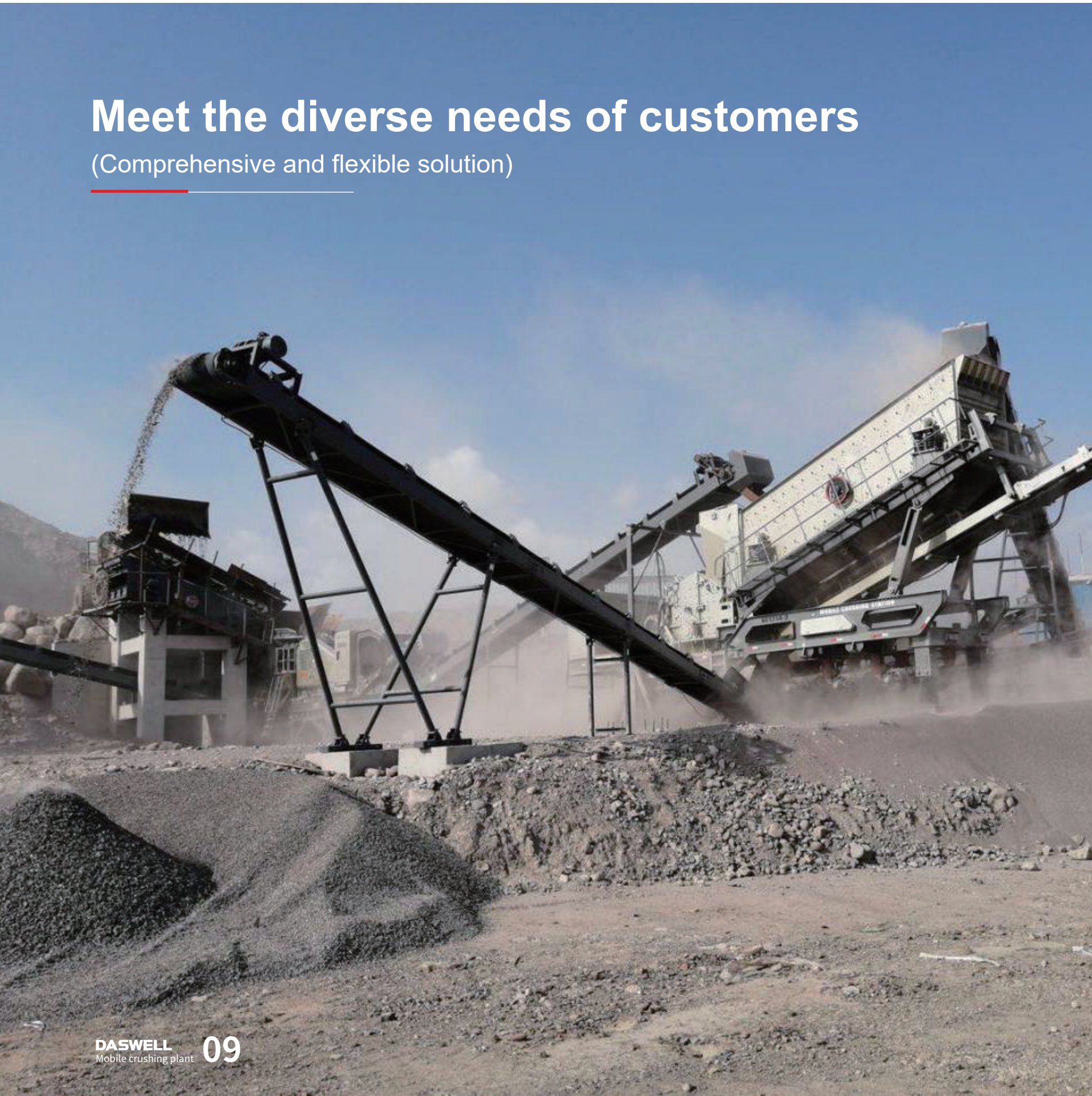
The technology of each subdivision module is more professional, and the matching between modules is more tacit, realizing uniform feeding, continuous crushing, sufficient screening and classified transportation.





# Meet the diverse needs of customers

(Comprehensive and flexible solution)



*NO.1*

## FLEXIBLE COMBINATION

■ The integrated series of mobile crushing plant can be used independently, or can provide more flexible process configuration according to the customer's material type and crushing requirements in the crushing process to meet the user's various requirements for mobile crushing and mobile screening.

THE FOLLOWING MODELS CAN  
BE FREELY COMBINED



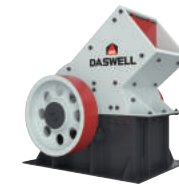
Jaw crusher



Cone crusher



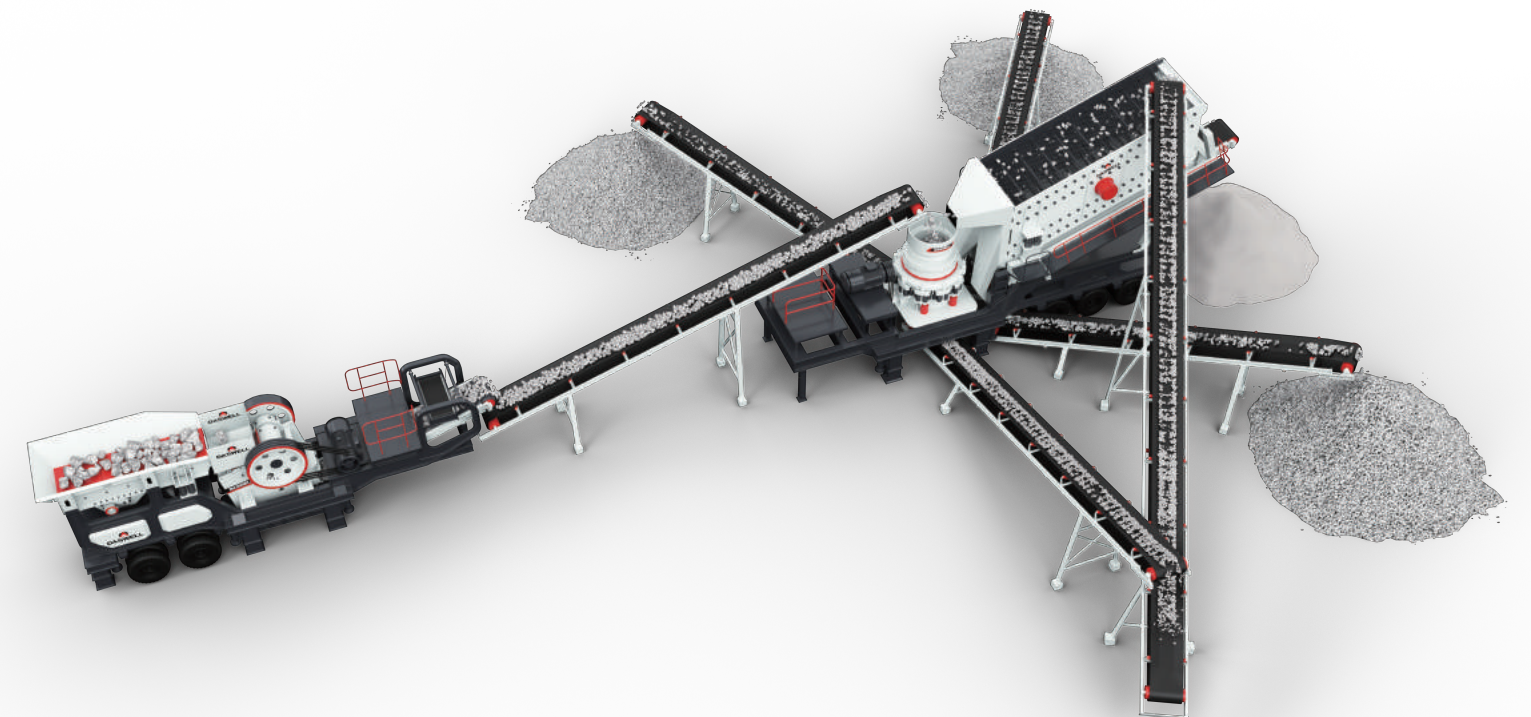
Impact crusher



Hammer crusher



Sand making machine





NO.2

CONVENIENT FOR **TRANSITION OPERATIONS**

■ It can be driven directly to the site and quickly enter the working mode, which is convenient for transition operations, avoids the complex site infrastructure and installation operations of the split machine, reduces the consumption of materials and working time, also reduces the work cost.



NO.3

**ADAPTABLE**

■ The tire type adopts a high-torque walking motor, which has mature technology, large driving force and high reliability; the crawler chassis adopts an all-steel ship-shaped structure, which has high strength and good passability, and can adapt to mountains, wetlands and other landforms, and has good adaptability.



NO.4

INTEGRATED **COMPLETE UNIT**

■ The integrated equipment installation form avoids the complicated site infrastructure installation operation of the split components, and reduces the consumption of materials and working time. The reasonable and compact layout of the equipment improves the flexibility of site stationing.



NO.5

SMART AND **EFFICIENT**

■ The user-friendly control operation panel can not only provide users with more flexible options for production, but also have powerful fault diagnosis functions, which can effectively reduce equipment maintenance time.





# Construction Cases

Daswell Mobile Crushing Plant



Dawei mobile crushing plants are located all over the country and exported to more than 40 countries and regions. The sales volume of mining machinery and equipment has been in the forefront of the world for many years.



# Corporate Culture

## Build a better world with high-quality products

With 36 years of focus on machinery and equipment manufacturing, we adhere to the original intention, only to make better machinery and equipment.

# 1986-2022

**Enterprise mission:** build a better world.

**Enterprise vision:** Let more customers around the world use better construction machinery, and create more value for customers.

**Enterprise values:** customer-oriented, dedicated employees as our foundation, take an unrelenting effort.

# After-Sales Service

**Daswell--Be a good helper to customers**

DASWELL upholds the integrity management, customer first service tenet, in addition to the excellent product and excellent solution design, DASWELL also has a thoughtful perfect pre-sale and after-sale technical services, help solve the problems from project consultation, field survey, and sample analysis to the project design, installation, debugging, maintenance, etc. Ensure that all parts are properly connected with customers and timely solve customer needs.

- DASWELL has skilled and experienced after-sales maintenance service engineers, who can timely provide satisfactory solutions to customer problems.
- We will build a WeChat group or WhatsApp group for each customer. If you have any questions, you can feedback at any time. We will provide uninterrupted service for you 24 hours, 365 days.
- Within the warranty period (within 12 months from the date of completion of debugging), we will provide repair for the damage caused by human causes, and only charge the cost price for the materials and accessories used in the repair. Our company is responsible for the repair or replacement of any problem or damage caused by non-human causes.
- Adequate parts library. There are various types of accessories for all kinds of equipment in the accessories library to prevent the operation and production of customer equipment from being delayed due to the lack of accessories.

