

CONCRETE MIXER WITH
PUMP

DASWELL

HENAN DASWELL MACHINERY (PHILIPPINE) INC

Tel: (0917) 892 1387 (0908) 784 1537

Email: salesph@daswell.com

Facebook: www.facebook.com/daswellmachinery

Manila address: Phase 6 BS 12A Lot 9 Brookes Lane Brgy. San Francisco, along Arnaldo Highway, General Trias, Cavite, Philippines

Davao address: Km. 14 Diversion Rd., Toreno Compound, Brgy. Panacan, Davao City

Web: www.daswell.com



CONCRETE MIXER WITH PUMP

We help to build a better world

Customers First

| Dedication

| Perseverance

D & W

Company introduction

2023



1986

Daswell is a China based high quality machinery supplier. Our company has over 30 years experience. With several producing bases in China, we can provide many kinds of heavy machinery with high quality.

So far, our products are exported to more than 80 countries overseas, such as Germany, USA, Norway, Ireland, Philippines, Indonesia, Egypt and so on. In order to provide better service to customers, we established subsidiary companies and branch offices in different countries, like Philippines, Indonesia, Pakistan, Egypt, Peru, and Uzbekistan.

We are growing mainly by our good reputation year by year, as we always promise to supply high quality products with good service all the time.

Daswell aims to provide better machinery to create more value for customers, and help to build a better world together.

Company History Timelines

The Pursuit of excellence



OFFICE ADDRESS

China offices : No.2 CBD, Zhengzhou New District, Zhengzhou City
Qingzhou city, Shandong Province

Philippines branch company : Henan Daswell Machinery (Philippines) INC. Phase 6 B5L12A
Lot 9 Brookside lane Brgy. San Francisco along Arnaldo, Highway Gen Trias Cavite, the Philippines.

Indonesia branch company : PT. Daswell Indonesia Group
Komplek Pergudangan Green Sedayu Biz Park Cakung Blok GS 9 No. 35, Kel.
Cakung Timur, Kec. Cakung, Jakarta Timur 13910

Pakistan branch company : DASWELL MACHINERY PAKISTAN (PRIVATE) LIMITED
57 HAJVERY COMPLEX, 2-MOZANG ROAD, LAHORE, Lahore Data Gunj Bukhsh Town

Bangladesh branch company : DASWELL MACHINERY BANGLADESH LTD.
F-106, Mohakhali School Road, Dhaka-1212

Egypt office : Elmearaj Elsofly, Cairo Building no 7127 Flat no. 1

Malaysia branch company : DASWELL MACHINERY MALAYSIA SDN. BHD.
VO3-10-23A, SUNWAY VELOCITY DESIGNER OFFICE, LINGKARAN SV, SUNWAY VELOCITY,
JALAN COCHRANE 55100 KUALA LUMPUR W.P.KUALA LUMPUR MALAYSIA

Peru branch company : DASWELL PERU E.I.R.L
Number 651 K Carrer JR. THE TREASURE,URB. TUPAC AMARU, SAN LUIS, LIMA, PERU.

Mexico branch company : DASWELL MEXICO SA DE CV
Rio Guadiana 11, Colonia Cuauhtémoc, Mayor's OfficeCuauhtemoc, Mexico City, Mexico

Uzbekistan branch company : DASWELL LLC
9,Novesergeliyskaya str. Sergeli district, Tashkent city

Russia branch company : Michurinsky prospect, 19, Moscow



Concrete Mixer with Pump

Concrete mixer with pump is a combination of concrete mixing and concrete pumping. The wheel loader feeds the sand, stone and cement into the skip hopper. Then the skip hopper delivers the material to the mixing drum. After mixing, the concrete is directly discharged into the pumping hopper, then pump to the destination through the pumping system and pipeline. The whole operation is quite easy. It saves the labor. And the concrete mixer with pump also has the advantages of small size, convenient to transport, low energy consumption, etc. It is very suitable for small housing construction, road construction, water channels, slope protecting projects.

50 Pumping 50m³/h
mixing 20m³/h

200m Horizontal pumping distance 200m
Vertical pumping distance 50m

15 No. 1 in sales for 15 consecutive years
World class pumping quality

500⁺ Annual sales of 500+
Sold to more than 40 countries worldwide



Six major system strength escort

Witness quality power



Strong mixing system



High efficiency pumping system



Stable hydraulic system



Cleaning cooling system



Extreme wear resistance technology



Centralized lubrication system

No.1

Strong mixing system

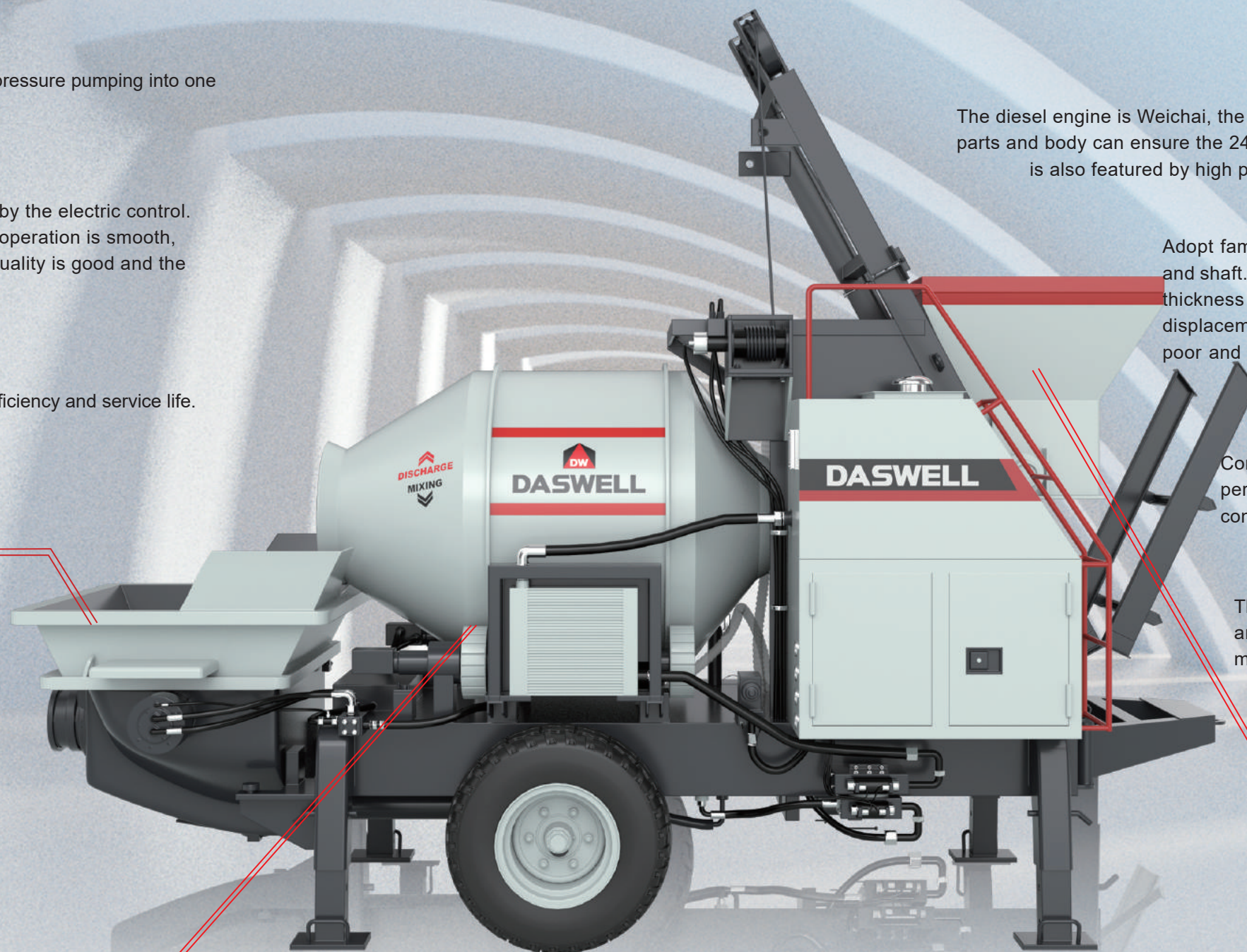
The operation is fully automatic. Make feeding, mixing and high pressure pumping into one unit; simple operation and stable performance.

Better mixing quality

The hopper and the rotation of the mixing drum are controlled by the electric control. The energy consumption is less, the structure is compact, the operation is smooth, the transmission is reliable, the operation is easy, the mixing quality is good and the production efficiency is high.

Bigger mixing drum

The use of large cubic mixer greatly improves the construction efficiency and service life.



No.2

High efficiency pumping system

Reliable brand

The diesel engine is Weichai, the main oil pump is Kawasaki, an international famous brand. The strong parts and body can ensure the 24-hour uninterrupted operation of the Concrete mixer with pump. And it is also featured by high processing accuracy, good oil temperature control and long service life.

High power mixing motor

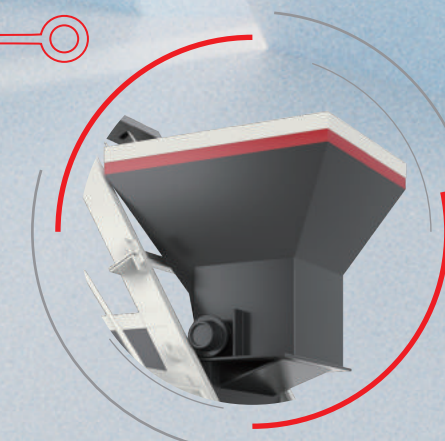
Adopt famous brand mixing motor, step type super wear-resistant mixing blade and shaft. The left and right shaft hardness reaches HB250-280, surface nitriding thickness is more than 0.3mm, surface hardness is more than HV550. Large displacement, large torque mixing motor forced feeding. When the material is poor and the hopper height is raised, it can also mix normally, so as not to be stuck and improve the material suction.

Strong pumping capacity

Conveying cylinder diameter is 200mm-230mm. It improves the suction performance of concrete mixer pump and can ensure to pump more concrete each time. It can also adapt to some dry concrete, can easily handle 4cm pebbles and gravel.

Optimized hopper

The hopper adopts high-strength wear-resisting steel welding processing, anti concrete-accumulation internal structure and optimized angle of the mixing device, which improved the suction efficiency and can easily handle various of difficult concrete.



No.3

Stable hydraulic system

The hydraulic oil circuit is an open circuit, high efficiency, good heat dissipation and stable operation.

- The main oil pump is Kawasaki. The pump has the function of constant power and constant pressure to fully guarantee the reliability of the hydraulic system.
- The accumulator is equipped together with current compensator, which has certain compensation effect when the voltage and current is not stable.



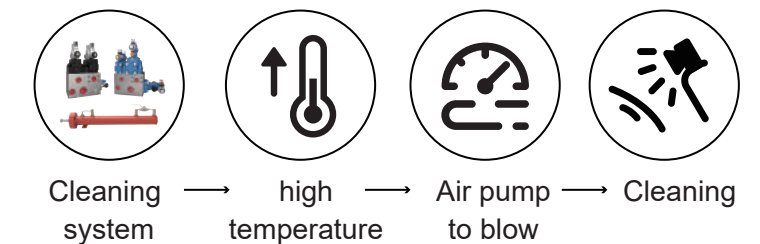
No.4

Cleaning and radiating system

■ Pickling and phosphating for hydraulic tank and steel pipe

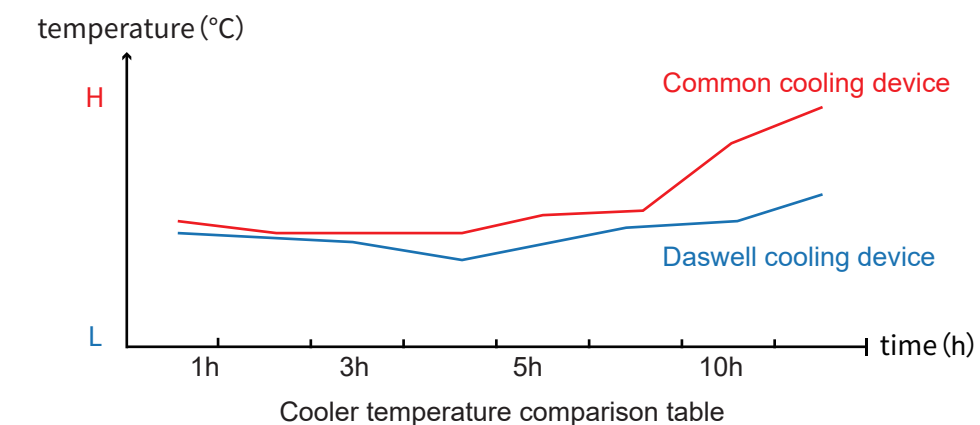
Special cleaning oil tank to clean rubber hose and valve block. For diesel cleaning mouth, firstly, high temperature, and then pressure air pump blowing and washing, to ensure no any impurities. Make the hydraulic system clean enough so that the equipment failure rate is Lower and system service life is longer.

Life increases
↑5-10%



■ Heat dissipation and filtration device

Adopt domestic famous brand oil filter. The filter precision of the main pump oil suction filter is 100μm. The cooler is made of airline products with reliable quality and a good heat dissipation effect. It can work normally in high temperatures. Fully automatic forced central lubrication system, system filtration and auto grease each lubrication point protects the vulnerable parts all the time.



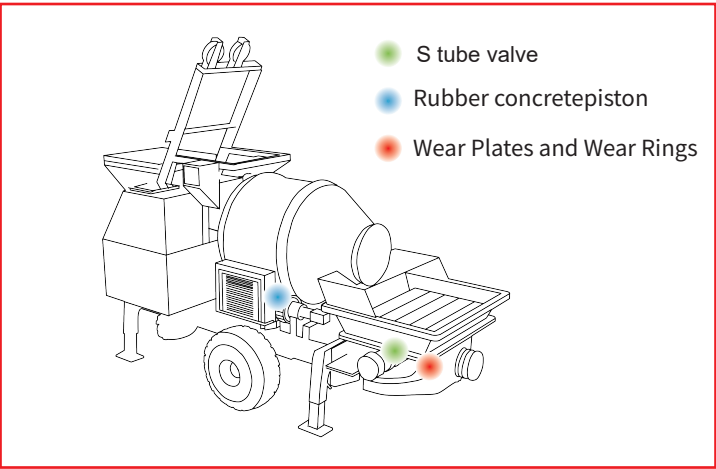
Example filter device

No.5

Extreme wear-resistance technology

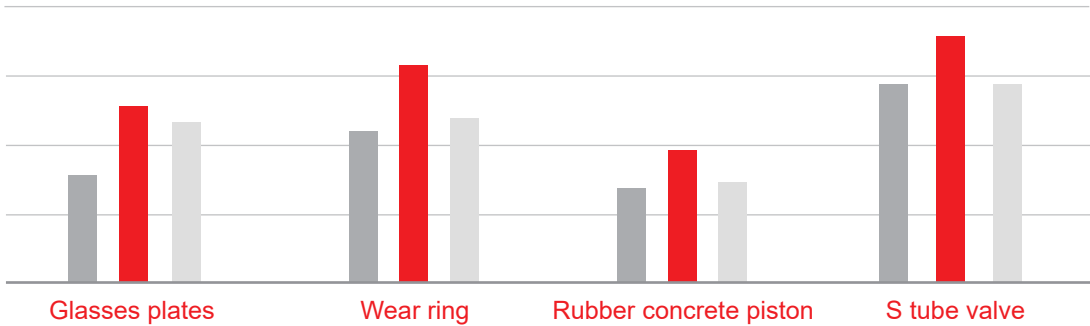
High wear resistant wearing parts, and constantly improve the quality and performance of each component.

- Glass plate, cutting ring adopts hard alloy, good wear resistance, and easy to replace. The cutting ring is with function of automatic compensation gap after wear.
- The rubber concrete piston is extremely pressure resistant, wear resistant and heat resistant and can adapt to all kinds of bad working conditions. Its service life can reach 20,000 to 30,000 square meters.
- S valve adopts high manganese steel whole casting molding; for easy wearing surface, it uses anti-wear material welding; it has the advantages of high-pressure resistant and wear-resistance.



Comparison analysis icon on the wear resistance of the Concrete mixer with pump

■ general Concrete mixer with pump ■ Daswell Concrete mixer with pump ■ Old style Concrete mixer with pump



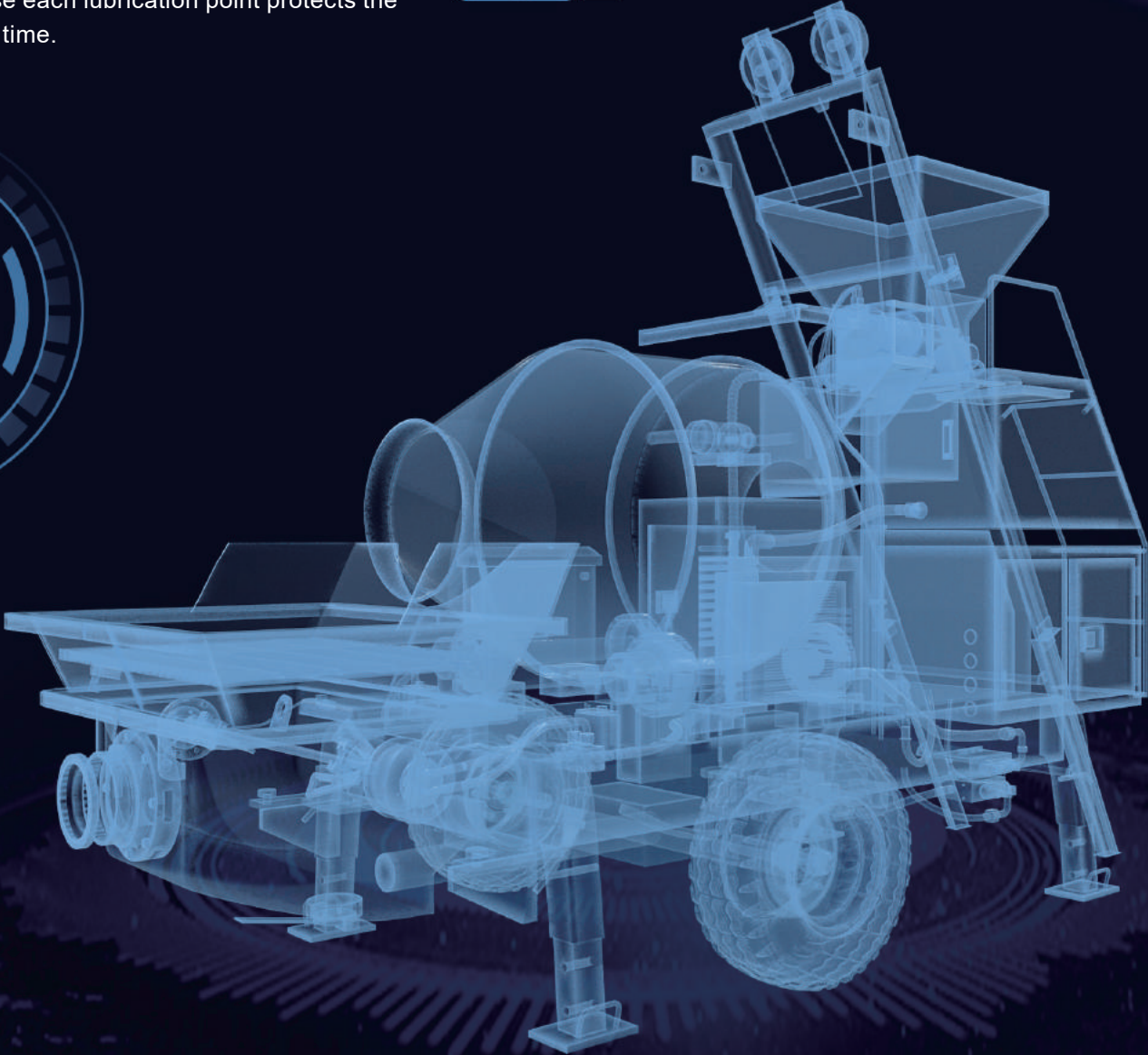
Concrete mixer with pump factory picture

loss reduction
↓ 15%

No.6

Centralized lubrication system

- The lubricant is injected into the main line by a plunger pump and distributed to each lubrication point through a distributor. Point-to-point lubrication protects critical components from wear and tear.
- Fully automatic forced central lubrication system, system filtration and auto grease each lubrication point protects the vulnerable parts all the time.



High quality components

Create high quality products

Improved wearing parts: glasses plate, cutting ring, rubber spring, proximity switch, small end assembly, small end seal, small end wear sleeve, piston, mixing seal, large end seal, solenoid valve, terminal relay safety, diesel engine filter element, etc.



Distribution system

Nested S-tube valve, adopts brand swinging cylinder



Hydraulic pipeline and valve set

Adopt Manuli oil pipe imported from Italy. Adopt Taiwan oil research hydraulic control valve.



Power system

Adopt Kawasaki main oil pump.



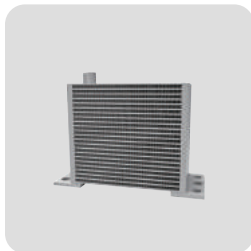
Electric control system

Adopt Japanese Omron intermediate relay.



Mixing system

Adopt famous brand mixing motor, step type super wear-resistant mixing blade and shaft.



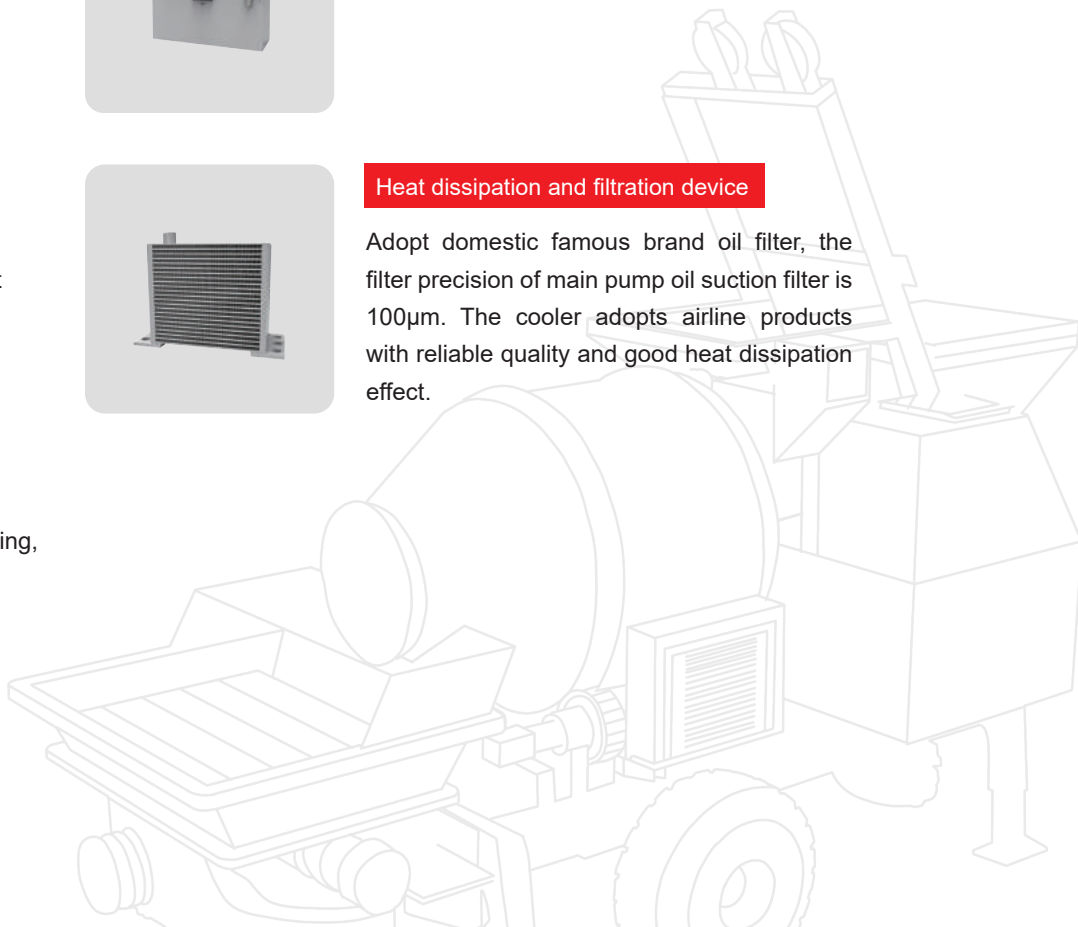
Heat dissipation and filtration device

Adopt domestic famous brand oil filter, the filter precision of main pump oil suction filter is 100μm. The cooler adopts airline products with reliable quality and good heat dissipation effect.



Glasses plate, cutting ring

Adopt hard alloy inlaid manufacturing, durable.



Seamless connection

pipeline configuration

The pipes we provide are seamless high-pressure pipes. The pipe diameter is 125mm, the thickness is 4.5mm (the elbow is 5mm). The pipe is mainly composed of straight pipe, bend pipe, reducer pipe, elbow, hose, pipe clip, rubber ring, O-ring, cleaning ball. We are equipped with a complete range of pipe specifications to meet the needs of customers in different working conditions. For example: the straight pipe we have 3m, 2m, 1m; Bends are available in 6 sizes, with different lengths and angles (90°, 45°, 30°, 15°). Pipe cards can be equipped with traditional bolt pipe cards and C type quick pipe cards. C type quick tube card, easy to install and disassemble, save time, improve work efficiency.

360°

Close combination, no gap, high safety, high production efficiency

4.5mm thickness

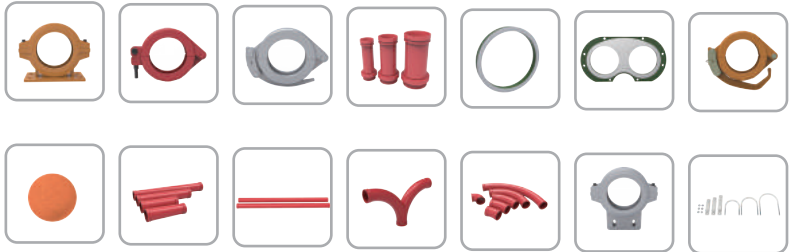
The pumping pipe is durable, compact and powerful

48 accessories

Equipped with various pipe specifications, to meet the needs of customers in different working conditions.

10 min

Easy to install and disassemble, save time and improve work efficiency.



Parameter

Parameter		Unit	EMP50	DMP50
Power	/	Kw	Electric motor; 45kw	Weichai diesel engine; 85kw
Whole machine parameter				
Whole machine	/	Unit	EMP50	DMP50
	Length	mm	4250	5400
	Width	mm	2100	2200
	Height	mm	2700	2800
	Weight	kg	4000	5200
Mixer parameter				
Mixer	/	Unit	EMP50	DMP50
	Mixer model	/	JZM450	JZM450
	Theoretical mixing capacity	m3/h	15-25	15-25
	Maximum aggregate size	mm	40	40
	Working cycle time	s	72	72
	Feeding height	mm	1400	1400
	Hopper capacity	m3	0.65	0.65

Pumping system	/	Unit	EMP50	DMP50
	Theoretical pumping capacity	m3/h	50	50
	Theoretical pumping pressure	MPa	10	10
	Theoretical pumping time	Times/minute	21	21
	Delivery cylinder	/	230*800	230*800
	Hydraulic system	/	Open	Open
	Distribution valve	/	S valve	S valve
	System pressure	MPa	28	28
	Delivery pipe diameter	mm	125	125
	hydraulic valve	/	Power	Power
	Main oil pump	/	Kawasaki	Kawasaki

D&W

Product photo



Product photo



Corporate culture

Build a better world with high-quality products

With 37 years of focus on machinery and equipment manufacturing, we adhere to the original intention, only to make better machinery and equipment.

1986-2023

Enterprise mission: build a better world.

Enterprise vision: Let more customers around the world use better construction machinery, and create more value for customers.

Enterprise values: customer-oriented, dedicated employees as our foundation, take an unremitting effort.

After-sales service

Daswell--Be a good helper to customers

DASWELL upholds the integrity management, customer first service tenet, in addition to the excellent product and excellent solution design, DASWELL also has a thoughtful perfect pre-sale and after-sale technical services, help solve the problems from project consultation, field survey, and sample analysis to the project design, installation, debugging, maintenance, etc. Ensure that all parts are properly connected with customers and timely solve customer needs.

- DASWELL has skilled and experienced after-sales maintenance service engineers, who can timely provide satisfactory solutions to customer problems.
- We will build a WeChat group or WhatsApp group for each customer. If you have any questions, you can feedback at any time. We will provide uninterrupted service for you 24 hours, 365 days.
- Within the warranty period (within 12 months from the date of completion of debugging), we will provide repair for the damage caused by human causes, and only charge the cost price for the materials and accessories used in the repair. Our company is responsible for the repair or replacement of any problem or damage caused by non-human causes.
- Adequate parts library. There are various types of accessories for all kinds of equipment in the accessories library to prevent the operation and production of customer equipment from being delayed due to the lack of accessories.

